



-R L N DP RUW &RPEX WLR
 RGG &RPEX WLR &
 D G HDERG EUD
 , GX WULDO D G WLWLW R
 :DWHUWXEH RLOHU
 'XFW XU HU IRU
 &
 , LWRU FD HU D G
 OWUD R R XU HU
 SDUH DUW

JOHN ZINK HAMWORTHY
 COMBUSTION

COEN **TODD**
 Clean combustion. Powerful results. Combustion™

HAMWORTHY
 Peabody

Industrial "D" and "O" Type Water-tube Boilers
 HRSG's • Extreme Duty Fire-tube Boilers
 Water Pumping and Treatment Systems
 Fuel Skids • Stacks



Rectangular and Cylindrical Economizers
 Condensing Economizers
 Feed-water Pre-heaters
 Tubular Air Heaters



Spray , Tray &
 Packed Column Type
 Deaerators



EPA Compliant and Non Compliant
 Opacity Monitors
 Dust Monitors, Audit Neutral
 Density Filters



WHDP XUEL H UD L IURP
 , WR ,
 HDUER H

Moving into our fourth decade, the A.B.L.E Company has been the leading provider of the following services throughout the Northeast: Preventative Maintenance, Repair, Emissions Testing, Instrument Calibration & Equipment Startup Field Services • Competitively Priced Replacement Parts for All Brands of Boilers, Burners & Controls • Heating Plant Control System Design, Equipment Procurement & Operator Training • Steam Plant Efficiency and Optimization Audits



www.ablecompany.com

Experience

Currently servicing and maintaining over 250 high pressure boiler systems, ABLE Company is the single largest industrial watertube service organization in the region. Our field service engineers average more than 20 years of boiler and combustion controls experience ensuring fast evaluation and diagnosis of a wide variety of issues.

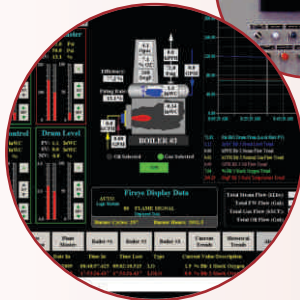
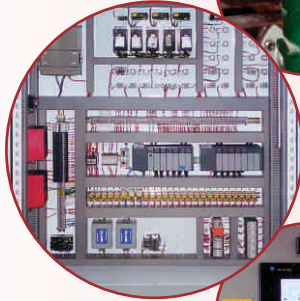
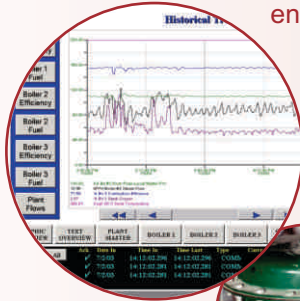
ENGINEERING

Experience

ABLE Company is the region's leading independent control systems integrator with the successful design and installation of more than 250 Combustion Controls, Burner Management and SCADA systems for close to 40 years. ABLE Company has more experience than any other in the region.

Reliability

Because we also service the systems we produce, we work very hard to ensure a long lasting and low maintenance system. By utilizing robust designs and industrial grade products we provide reliable and well designed systems that keep our customers happy.



Emergency Service

We are available 24 hours a day
Seven days a week
365 days every year

PARTS SUPPLY

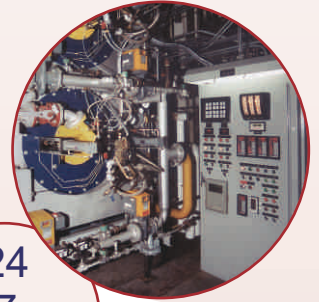
ABLE Company has supplied our customers for close to 40 years with economical and fairly priced replacement parts.

Let us put our excellent vendor relationships to work for you.

The following is a partial listing:

ABB, Acromag, AGM, Allen-Bradley, ASCO, Ashcroft, Bailey, Barksdale, Brooks, Cash Acme/Tyco, Cashco, Clark Reliance, Cleveland Controls, Copes, Conoflow, Control Concepts, Copes, COSA, Danfoss, Deitrich Standard, Delevan, Devar, Dixon, Durag, Dwyer, Eclipse, Endress & Hausser, Eurotherm Chessell, Ernst, Fairchild, Fireye, Fisher, Foxboro, Hagen, Hauck, Hays, Hays Cleveland, Hoffman, Honeywell, IDEC, IMO Pumps, Intec, Iris, ITT Barton, ITT General, Jamesbury, Jordan, Kessler Ellis, Leslie Controls, Magnatrol Valve, Maxitrol, Maxon, McCrometer, McDonald Miller, Micro Mod, Micro Motion, Modicon, Moore/Siemens, MSA, Omega, Penberthy, Preferred, Red Lion, Ronan, Rosemount, SOR, Spence, Square D, Swagelock, Tate Jones, Temp-Pro, Tyco, Verabar, Vulcan, Warren Electric, Warrick, Westinghouse, Yokogawa

24
7
365



Safety

Today, facilities simply cannot afford to take any chances with operational safety. All control, instrumentation and monitoring systems provided by ABLE Company are fully compliant with the latest industrial standards and government regulations.

Flexibility

Any job is easy with the right tools. As an independent integrator we have the flexibility to choose the best controllers, PLC's & instrumentation for the job. We have many successful systems using controllers from all of the leading manufacturers.

Choose the right tool for the job. Choose ABLE.

and many more...

